

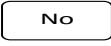
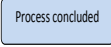


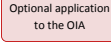
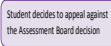
## FLOWCHART OF THE STUDENT DISCIPLINE REGULATIONS

This flowchart is designed to detail the main stages of the disciplinary process. It is not designed to provide a complete set of information on the way in which cases of alleged misconduct are managed at City.

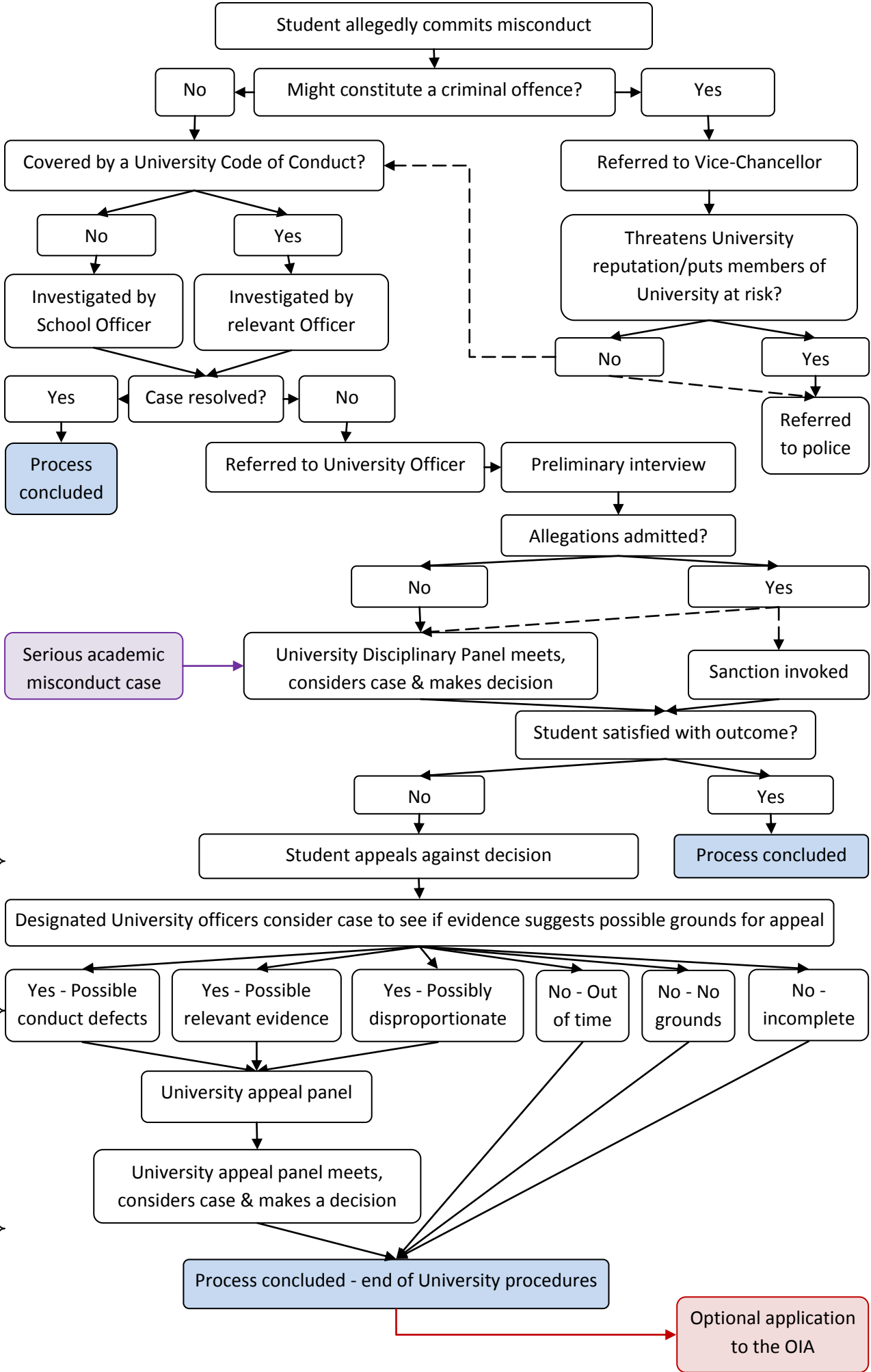
Please use this flowchart alongside the Student Discipline Regulations [<http://www.city.ac.uk/about/city-information/governance/constitution/senate-regulations> ], the Student Discipline Policy [[http://www.city.ac.uk/adu/dps/student\\_discipline\\_policy.pdf](http://www.city.ac.uk/adu/dps/student_discipline_policy.pdf)] and any information provided in your Programme Handbook.

Support for students facing a disciplinary charge is available from the Union Support Service at <http://www.culsu.co.uk/advice> and the Appeals, Complaints and Enhancement Office at [www.city.ac.uk/ace](http://www.city.ac.uk/ace).

### Key to the flowchart:

-  = action/stage
-  = end of process
-  = to next action/stage
-  = regulations allow a choice of approach/action
-  = stage outside the University's internal processes
-  = interface with a different set of regulations

# STUDENT DISCIPLINE REGULATIONS FLOWCHART



{ 21 days }  
 { 7 days }  
 +  
 { 21 days }  
 { 28 days }  
 +  
 { 14 days }